



TLP:CLEAR = Publicly



# Error Handling

DSOP Control Information Common Standard - Operational processes



Brønnøysundregistrene



# Error Handling

## Process overview



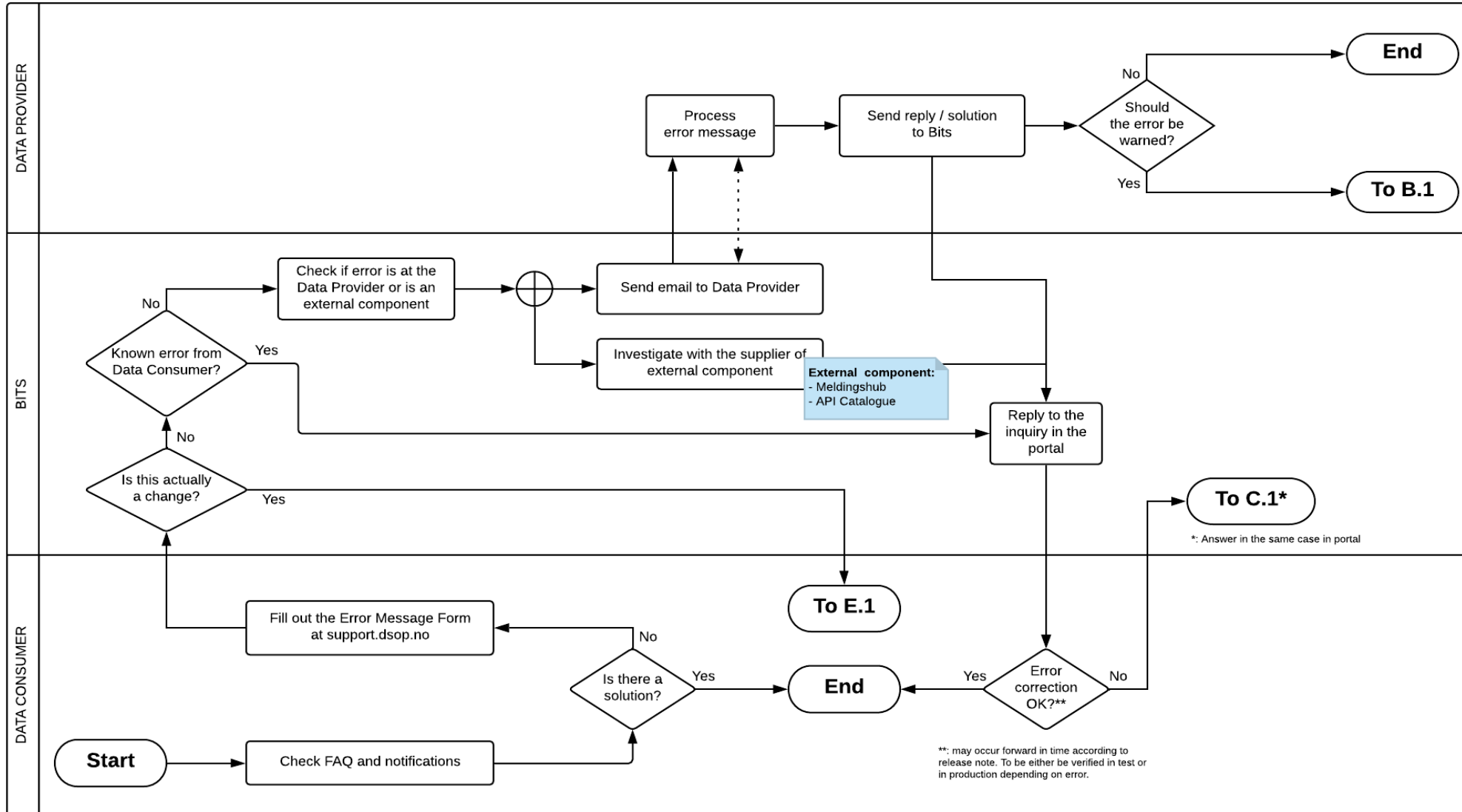
C.1

Errors from Data Consumer

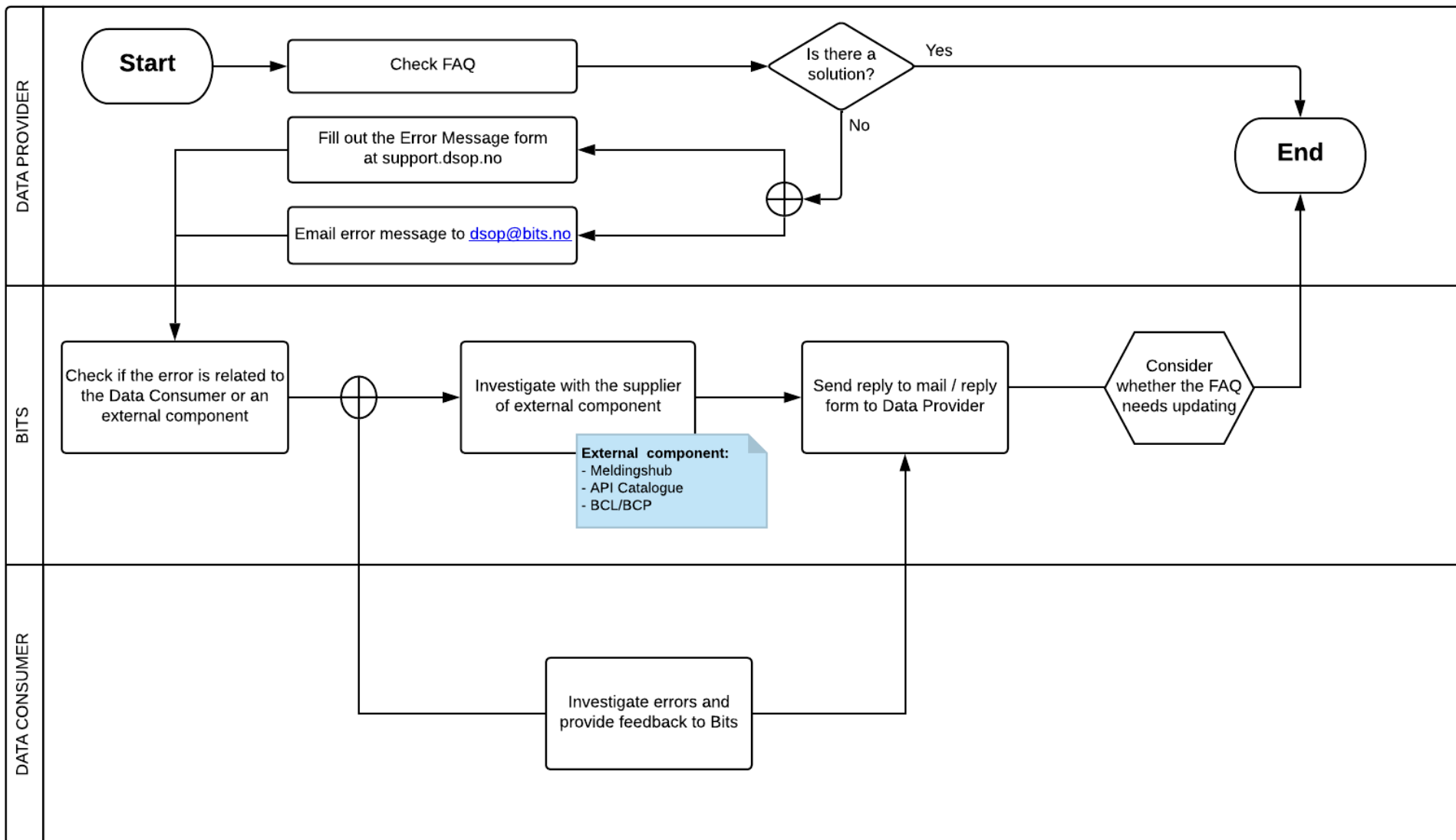
C.2

Errors from Data Provider

# C.1 Errors from Data Consumer



# C.2 Errors from Data Provider



The image features a central logo for 'DSOP' set against a light blue background. The background is a composite of several elements: a perspective view of a modern building's glass facade on the left, a stylized globe on the right, and a network of white lines with glowing nodes connecting various points. Faint binary code (0s and 1s) is scattered throughout the scene. The logo itself consists of the letters 'DSOP' in a bold, blue, sans-serif font. Above and below the letters are two curved blue lines that form a partial circle. Below the main text, the full name 'DIGITAL SAMHANDLING OFFENTLIG PRIVAT' is written in a smaller, blue, sans-serif font.

**DSOP**

DIGITAL SAMHANDLING OFFENTLIG PRIVAT